



An initiative of UKIRA

Issue 7

SEPTEMBER 2002

Uki News

Where the mountains touch the sky!

Help Save Uki News!

You are now reading the seventh issue of the Uki News, produced every second month by the Uki Residents Association (UKIRA) and delivered to 850 addresses in the Uki district between Byangum Bridge and the Nimbin turnoff.

Positive feedback has emphasised the strengths of a community newsletter:

- information about local issues and events,
- ability to advertise local businesses and activities
- having a say.

You may not be aware that the first issues of the Uki News have only been made possible through a state government grant, as well as the voluntary efforts of a small, dedicated bunch of local residents, working under UKIRA.

This government grant has now run out, and, if the Uki News is to continue, we at UKIRA need to raise funds quickly.

- The cost of printing and postage for each issue is about \$400 (everything

else is done by volunteers).

- Advertising brings in around \$200 per issue ("three cheers" for all advertisers and thanks for your support).
- This leaves a shortfall of about \$200 per issue. We plan to put out five or six issues each year.

So, we need to raise around \$1,000 per year.

That's why we are asking for your help. We would like you to please consider making a contribution toward the costs of producing the Uki News.

Cheques made out to the Uki Village & Districts Residents Association can be sent to PO Box 141, Uki, or cash donations can be made at the Uki Post Office (just ask Peter or Lyn, who have kindly offered to collect for us).

Please provide contact details so that receipts can be issued. We would also like to acknowledge donations in the Uki News (name only, not amount), but if you would prefer to re-

main anonymous, please indicate this on the back of the cheque.

We would like to inform you that UKIRA is an association of local residents, which:

- was incorporated on 8 February 2001 under the Associations Incorporations Act, 1984 (Incorporation N° INC9875675).
- holds a current authority (N° CFN17262) under the Charitable Fundraising Act, 1991
- has its annual accounts independently audited.
- holds regular meetings which all local residents are welcome to attend.

Feel free to discuss any of the above with our Treasurer and Public Officer, Philip Carr on 66795855.

If you are unable to contribute financially we encourage you to help in other ways. Just get in touch with one of the contacts listed on page 2.

By Phil Carr

Inside this issue:

From the president's desk	2
Welcome to all	2
Who to contact	2
Uki News Flash	3
Many hands make light work	3
Uki School enrolments	4
Red Cross report	4
RSL Uki Branch	4
Happy B'day Uki Garden Club	5
Butterflies & Frogs	5
Letters to the Editor	6
Ticked off?!	7
Roadworks & the maca tree	7
Uki School Out-back showday	8
Soccer News	8
Where are you?!	8

The Uki Community Technology Centre Is Here!

By Diane Kerr, Uki CTC Manager

The Community Technology Centre at Uki will be opening at the end of September. We are offering secretarial services, computer games, Internet, desktop publishing, scanning and printing of photos as some of our initial services.

Whether you are a sporting group needing a newsletter

published, a teenager looking for something to do after school, a grandparent wanting to write to their grandchild on the Internet, or someone doing family research and needing a computer to research online, you can do it, or even learn to do it all, in your local CTC.

We will be having working bees

to prepare for opening and could do with some help. Anyone with a bar fridge they don't use and would like to donate, we will gladly accept.

Give me a call on 6679 5399 or drop in and introduce yourself. I am compiling a list of volunteers and we need your assistance!

UKIRA is the Uki Village and Districts Residents Association Incorporated, a not-for-profit community organisation that provides a forum for residents to discuss and act upon local issues

UKIRA MEETINGS are held the 1st Tuesday of each month in the Uki Hall at 7pm.

Please come along to our next meeting Tuesday 1st October, 2002, 7pm.

COPY DEADLINE for Uki News issue 8, is 15th October, 2002, due out mid November. See page 2 for contact details!

DISCLAIMER... The opinions expressed in this newsletter are the contributor's own and are not necessarily those of UKIRA.

From The President's Desk...

By Jeanette Simpson



Many things have been happening in the Tweed of late.

I recently toured the full new highway section with a friend. We started at Melaleuca Station and smoothly ended up in Bangalow. On the return run we came out at Clothiers Creek Road. I must say, it's easier to drive on a straight road than a bendy one and I loved the plantings along the way.

Last month's Banana Festival was a great success. I enjoyed the Procession and the Rotary Art Show where I viewed the painting Uki artist Robert Todenai painted of racing cars. This painting was featured on posters for the 'Speed on Tweed' event of racing car time trials that was held in Murwillumbah on Saturday 21st and Sunday 22nd of September. The street party Friday night 20th September was fantastic and we all enjoyed the historic racing cars that were in Main Street for viewing on the night. Of course meeting Sir Jack Brabham and the other drivers was an added bonus!

Recently the house of another friend of mine was broken into. She was informed "you ring Pal". "What's that?" she said!

As a result the enclosed fridge flier has been supplied, so we can all find out what "Pal" is. My friend also wondered if anyone has been offered a cheap Pentax 35m automatic zoom/lens camera, she would like the film in it returned, as it contains precious pictures of a recent holiday she spent with her daughter.

Enjoy Spring!

You Are Invited...

To send in your favourite **Xmas Cake and/or Xmas Pudding recipe** for publication in the next newsletter.

You are also invited to send in any **newsworthy article** or voice your opinion in a **Letter to the Editor**.

Clubs are invited to let us know of any events or happenings you wish listed in the Calendar of Events for Dec/Jan.

Businesses are invited to advertise their wares and services in the Nov/Dec issue. This will be a bumper issue, so, don't miss out! Business card size ad only \$20!

Contact us now!

Who to contact

Uki Newsletter
PO Box 141 Uki 2484
Phone: 02 6679 5041
Fax: 02 6679 5101

Advertising:
Jeanette Simpson
6679 5725

our reasonable rates are as follows (Prices include GST):

- business card size ad \$20
- a quarter page \$50
- 1/2 page \$80
- full page \$150

Cost for advertising in our Public Notices/Buy & Sell section is \$1 per line. We can design an ad to suit your needs. We're only a phone call away!

Articles & features:
Phil Carr
pcarr@omcs.com.au
or 6679 5855

Layout & Design:
Tessa Martin
oakdale@better.net.au
or 6679 7060

Welcome to all our new residents!

And a very special welcome to our new postmasters, Lynne and Peter, who, since arriving in Uki, are doing a capital job of looking after all our needs... many thanks!

Pam and Barry, residents of 7 weeks, took the plunge and came to the UKIRA meeting on 6th August. We were very pleased to welcome them into the community. They were introduced to a near neighbour, learnt about some of the Uki happenings, left virtually unscathed and thinking about joining the Garden Club. UKIRA welcomes all residents (old & new) to the meetings held on 1st Tuesday of each month at 7pm in the local Hall. If you haven't been yet, give it a try.

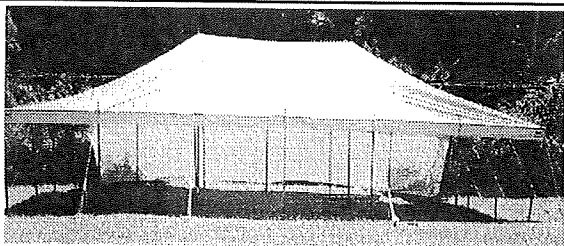
The Association is a friendly mix of residents who are slowly getting some things happening for the community.

UKI BUTTERY BAZAAR MARKET

*Every 3rd Sunday of the Month
Come & Enjoy the Day!*

Enquiries 6679 5369

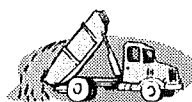
NEXT MARKET 15th September 2002



END OF YEAR & XMAS FUNCTIONS?!

MARQUEE FOR HIRE—SERVICING THE TWEED

For all your sporting events, school fetes, functions & parties!
Tables & chairs also available
Call Greg or Ruth on 07 5527 7126 to reserve your dates now!



**For all your earthmoving needs
contact Michael Brook!**

No job too big, no job too small!

From cleaning up to general earthworks,
Bobcat & Tipper hire

Phone Brooksie on 6679 5362 or 0427 795 362



**Forgot to get the milk again?
Out of bread too?**

No need to panic!

Now, you can save yourself the drive into town. The Mt Burrell General Store stocks everything you need; milk, bread & all other groceries & even **LIQUOR!** We also sell local art, craft, plants & delicatessen for all your last minute gifts!

MT BURRELL GENERAL STORE & CARAVAN PARK

7.30am-7pm Mon to Sat, Sun 8.30-7pm / phone: 6679 7170
3220 Kyogle Road, Mt Burrell

Uki News Flash...

Uki Sewerage

Residents of Uki village will be able to say goodbye to their septic systems in March 2003, according to Tweed Shire Council's latest timetable for construction of the Uki sewerage scheme. Work on the reticulation system has already commenced and construction of the sewerage treatment plant (on Smiths Creek Road) is set to start this month.

Contractors working on the reticulation system may require access to private properties and Council has advised that, in these cases, residents will be given 24 hours notice.

Once the sewerage system is complete it will be up to the residents of Uki village to make independent arrangements to connect their properties to the system. This will involve an application to Council, as well as the engagement of an authorised plumber.

Under an arrangement that will virtually eliminate the need to discharge treated effluent directly into Smiths Creek, Tweed Shire Council will use treated effluent from the sewage treatment plant to irrigate *Eucalyptus* trees to be planted later this year. Leaves from these trees will be harvested by staff from the Currumbin Wildlife Sanctuary and fed to koalas at the Sanctuary.

New Handrail on Smiths Creek Bridge

Tweed Shire Council has replaced sections of handrail on Smiths Creek Bridge following the theft of the Bridge's aluminium handrail during Easter. The new handrail is made of galvanised steel and has been fixed in a way that makes it more difficult to remove. With aluminium handrail apparently fetching a good price on the scrap metal market, many similar thefts have been occurring up and down the coast. Replacement of the handrail cost Tweed Shire ratepayers \$11,000!

Roadworks

No more stoppages on Byangum Bridge following completion of work to replace concrete planks and timber corbels. While on the subject of Byangum Bridge, great news is that, sometime during the 2003/2004 financial year, work will commence on the new Byangum Bridge, including improvements to Kyogle Road west of the bridge.

Many people may be wondering why Tweed Shire Council built a rather drab looking block retaining wall at Tall Gums, rather than perhaps using some of the rock that was already there. Well, Council engineers advise that although a rock wall would have had a 'softer' look, the situation at Tall Gums required a structural retaining wall, necessitating reinforced block. To soften the visual impact, Council has planted *Austromyrtus dulcis* (*Midyim*), a native spreading plant.

Switching of Overtaking Lanes

Following suggestions from residents, Council has agreed to switch the direction of the overtaking lanes at Boulder Close, Byangum and Lange's Road,

By Phil Carr

Uki. The overtaking lane at Glenock will not be altered. This work will be carried out when the line markings are done at Braeside.

Unsafe Pedestrian Access to Sweetnam Park

Over the last two years UKIRA has made various submissions to Council to build a safe pathway from Uki village to Sweetnam Park. Citing low priority, Council has yet to include this pathway in its Works Program. We will continue to pressure Council, and we invite interested residents to do the same.

Meanwhile, in acknowledging the very dangerous pedestrian access alongside Kyogle Road, Council has at least agreed to construct a path across the paddock opposite Mitchell Street. This work will be done in October. UKIRA has also brought to Council's attention the difficulties in crossing Kyogle Road at the Smiths Creek Road intersection. Council has also agreed to carry out additional work that will make this crossing safer.

Council to Extend Garbage/ Recycling Service

Following a positive response to Tweed Shire Council's proposal to extend weekly garbage/ recycling services along Kyogle Road west of Uki, Council has approved the project in principle, pending receipt of costings from the contractor. It is anticipated that availability of the service will be advertised in the Tweed Link in the next month or so.

Bats

Many local residents are relieved to see the departure of the Flying Fox colony from forest near Rowlands Creek Bridge in the heart of Uki. The National Parks & Wildlife Service had predicted that the fruit bats would head north over winter. The question is whether and when they will return.

Many Hands Make Light Work...

By Gloria Roszkiewicz

So, the saying goes... and we will keep you informed of projects underway. We hope one of them will move you to volunteer your services (maybe type a letter, make a few phone calls) or offer your expertise to achieve successful outcomes for our projects. We currently need help with:

Uki Buttery

We are a couple of steps closer to realising community ownership of the Buttery. We still have a couple of more hurdles, but are quietly confident of success. We will let you know the type of help needed and who to contact as soon as we are able to. So, keep this project in mind.

Monthly UKIRA Market Stall

We have decided to have a stall at the markets each month and YES, we need goods to sell and people to sell them. If you can provide goods, spare an hour or so on market days, or even for just one market, please contact Jeanette Simpson on 6679 5725.

Uki News

What a great success story! The feedback is tremendous and positive. Thanks to all who have contributed. As 2 of our volunteer staff are leaving, we are asking for your input. So, if this is your forte, please contact Phil Carr on 6679 5855.

ETC

To get the Community Technology Centre operating to its full capacity, volunteers are required to do small tasks on a roster basis. There will be a Volunteer Program with incentives. Please contact Cath Donaldson on 6679 5041 if you would like to be part of this exciting project.

Do you enjoy
great coffee
& homemade meals?!



Then why not enjoy
a cuppa & a bite at the
SPHINX ROCK CAFE

while you relax in
our beautiful gardens!

Open 6 days: 10am to 7pm,
Fri & Sat till 8pm, closed Tues

Kyogle Rd Mt Burrell,
Phone: 66797 077

Des Cecil's
Mt Burrell
Fruit

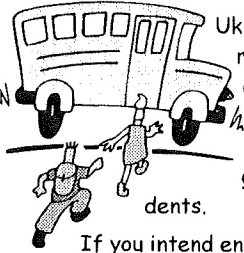


🌿 Farm Fresh Fruit & Vegies
🌿 Low Prices
🌿 Friendly Service

7.30am—7pm
7 days a week
Phone: 6679 7287

Uki School Enrolments...

By Garry Brabham, Principal



Uki Public School is seeking to identify new enrolments for 2003. The school has contacted all the parents of children on our books to commence Kindergarten next year. At this point in time we are anticipating a Kindergarten enrolment of between 25 - 30 students.

If you intend enrolling your child in Kindergarten in 2003 and have not been contacted by the school, please give us a call on 6679 5128 so that your child can be included in our calculations.

We will be holding a Kindergarten Orientation program for all prospective Kindergarten enrolments (and their parents) in early term 4. This is an excellent opportunity for parents and children to familiarise themselves with the school and gain an overview of how it operates. It also gives parents an opportunity to see how their child goes in the formal school situation. This is especially important for children who may not have turned six before starting school.

Community members are also urged to contact the school if they become aware of any children who may be moving into the area. This will assist us greatly with our planning and staffing for 2003. So if you manage to sell your house in the next few months and you are aware that the purchaser has school age children please give the school a call with this information.

Red Cross Report...

By Joy Armour

The AGM of the Uki Red Cross Branch was held in the Uki Hall on 16th July. The President reported a very successful year and thanked all the members for their help.

The Christmas and Winter appeal Days raised over \$3,600. Many thanks to the Uki Garden Club for their donations on each of these days, also thanks to the local business houses and to the people of South Arm and Uki for their continued support.

Last April all members were saddened by the death of their friend and Patron Mrs Ella Mitchell, fondly known as 'Mitch'. She was a member of Uki Branch from when it was formed in 1936 until she passed away. Several members received Long Service medals, 1st, 2nd, and 3rd bars last December and two members received the Laurel Wreath for 50 years membership. Patron M Harris took the chair for election of Officers:

- President J Armour,
- Senior Vice President E Pacey,
- 2nd Vice President J Robinson,
- Secretary M Hall,
- Treasurer B Brims,
- Auditor H Mills,
- Publicity Officer J Armour,
- Patron M Harris.

Margaret congratulated the Members on a successful year and wished them all the best for the following year.

RETURNED SERVICES LEAGUE - UKI SUB BRANCH...

This is an urgent and strong call to ex-Service men and women in the Uki and surrounding area. If you are eligible to join the RSL, we want you as a member of our Uki Sub Branch. Here are a few points you should know about:

1. We do not have a licenced club - so, we cannot offer you the excitement of poker machines with temptations of big winnings;
2. We are a very small Sub Branch - under 20 members;
3. We meet only a few times a year - on a Sunday, at the Uki School of Arts hall in Main Street;
4. We need new ideas to make sure our Sub Branch has a long life;
5. We need new members to provide those ideas - NOW!

Please give it a try! Get more information from Secretary Ray Blissett on 6679 5250.

Learn the healing art of Tai Chi now!

It can be your first step to better health, more vitality and that special sense of well being which evolves when you find peace within yourself!

Contact Mause & Rob Eaglen
(Senior WTBA instructors)
on 6679 7015

Uki classes: Wed 9.30-11.30am
Midgibil classes:
Mon 5.30-7pm, Thu 4.30-6.30
Private tuition available

Give yourself the power of inner strength & the ability to cope with the pressures of modern day life!



For all your classes, parties or events, Uki Hall for hire!

- Reasonable Rates
- All facilities, incl. Kitchen
- Lovely Heritage Building
- Booking forms at Post Office

Or phone 6679 7163



Did you know: Uki Post Office & Newsagency has new owners?!

But... still the same good old service!

For all your faxes, photocopies, newspapers, magazines & office items

Phone: 6679 5101,

Weekdays 7-5, Sat 7-12, Sun 7.30-11

UKI SAWMILL TWEED VALLEY



LOGGING CONTRACTORS

Phone: 6679 5116

"We Deliver"
BUY DIRECT

TIMBER YARD

- Sawn & Dressed Hardwood Timbers
- Building Materials
- Furniture
- Landscaping
- Fencing
- Slabs

Smiths Creek Rd, Uki
After Hrs 6679 5255
Fax 6679 5311

Happy Birthday Uki Garden Club...

By Julia Hancock

Last month marked the fourth birthday of Uki Garden Club and its membership now comprises approximately ten per cent of Uki's population, as well as people from Bray Park, Byrrill Creek, Kunghur, Limpinwood, Murwillumbah, Reserve Creek, Stokers Sid-ing and Tyalgum.

Why is it so successful?

- ✂ because it gives people the opportunity to find out about local plants and growing conditions;
- ✂ it enables members to swap or buy very cheaply cuttings, seeds and surplus edible produce;
- ✂ it is a venue for guest speakers, demonstrations and workshops;
- ✂ it organises bus trips and tours of gar-dens, flower festivals and nurseries;

✂ it offers an extensive library of garden-ing books free of charge to members;

✂ and most importantly, it gathers to-gether a motley collection of friendly, down-to-earth, caring, active and won-derful people to get to know over a deli-cious afternoon tea!

We meet on the last Saturday of each month, at a different member's garden every time, so ring president Cathie Miles on 6679 7191 for more information if you would like to join. Membership costs \$20 per year which covers the whole family and includes a monthly newsletter.

The talk on every gardener's lips at the mo-ment is, of course, the drought and how we are going to survive it. Most of us agree that it is pointless to even think about

planting anything until the autumn, when rain is next forecast. In the meantime it's a mat-ter of battening down the hatches in prepa-ration for the ferocious heat to come.

In practical terms this includes mulching any bare soil to prevent weeds from colonising; bringing pots and planters into a shady spot near the house where they can be hand wa-tered; and keeping an eye on individual treasures in the garden for emergency spot watering if necessary.

It is pointless trying to maintain the garden to its usual standard in these conditions. What we can all do however, is rejoice that we won't have to mow or weed much this season, and plan some fun activities to enjoy in our newfound free time!

Butterflies & Frogs...

By Penny Watsford



What have butterflies and frogs got in common? Not much, you may think. Friends of Wollumbin Landcare Group, however, saw a link between these two rather different animals: they are both WILDLIFE - amongst the many different types of wildlife found in our native forests. As Landcarers, we have planted many trees and we wanted to learn more about some of the animals that will take up residence in our developing patches of forest.

Two local Tweed Valley residents, enthusiastic observers of butter-flies (Greg Newland) and frogs (John Pumpurs) kindly agreed to con-tribute to an information evening in Uki in June this year. It was very interesting to learn that about 90% of the knowledge we have about Australian butterflies has come from amateurs, rather than from those holding paid research positions. Apparently that is true in regard to frogs as well.

In the Mt Warning National Park, 96 species of butterfly have been recorded. The most serious threat to butterflies is the loss or deg-radation of habitat. As most people are aware, the Richmond Bird-wing, a magnificent green and black butterfly, is in danger of be-coming extinct because of extensive clearing of the rainforest where its host vine, *Aristolochia praevenosa*, previously grew in abundance.

The population of frogs has declined, not only because the forests have been felled, but also because swamps have been drained. Many frogs take advantage of temporary pools of water, even puddles, to breed. Sadly, the spread of urban development has increased the drainage of swamps and reduced the possible breeding sites. In ad-dition, there has been a mysterious decline in the numbers of frogs in pristine rainforest areas. The Declining Amphibian Population Task Force was established in 1991 to look into this.

You can encourage both frogs and butterflies in your garden in the following ways:

- Have a garden pond with poolside vegetation and water plants;
- Have a variety of native plants, as different caterpillars need different plants;
- Many exotic flowering plants provide nectar food for butter-flies;
- Enjoy the beauty and wonder of caterpillars;

- Have shrubs, hedges and other low plants to provide shelter for frogs;
- Retain a wild, weedy section in your garden with some leaf litter, twigs, and stones;
- Both frogs and butterflies need shelter from the wind;
- Avoid the use of pesticides and herbicides.
- Control cats and dogs, especially between dusk and dawn: they will kill or disturb frogs.

I have a list of food plants for both adult butterflies and for caterpillars. Please phone me on 6679 5257 if you'd like a copy.



Carmen's Curtains

Professional Curtain
Consultant & Maker

FREE Measure & Quotes!

Specialising in:
Curtains, Valances, Pelmetts, Tie Backs, Cushions,
Bed Spreads, Tracks, Blinds, London Blinds,
Austrian Blinds, Roman Blinds, Vertical Blinds,
Fabrics Supplies

17 years experience in the curtain industry
Phone Carmen on 6679 7053

BLITZ ELECTRIC SERVICE

All installations, underground supply,
solar power, electromagnetic field survey & protection

FREE advice & quote!

Call Jürgen on 041 977 2897 or 6679 5717
or email blitz@norex.com.au

modern technology - better service

Lic No. NSW 88593C OLD 9406

Letters to the Editor...



What's In A Name...

Last month's article about the meaning of the name Uki, certainly set tongues wagging. We invited you to set the record straight and share with us your theories about the meanings of Uki & Mt Warning. This is what Mary Lee Connery from the Historical Society had to say:

"Uki may be a very short name for a very pretty village, but the explanation of its meaning offered last month by the TACTIC website has stirred many people. It is another awful warning of the perils of the web.

In 1887 an unidentified surveyor made a note on a map: "It has been suggested that, in the event of a village being proclaimed here, the name Uki might be adopted."

It is commonly believed that either Mrs Donoghue or George Sweetnam, both among the earliest South Arm settlers, was responsible for the suggestion as the families often had surveyors staying with them. From their properties along the river just north of the village, Mt Uki would have been a major feature of the landscape.

At that time, the area near the junction of Smiths Creek and Rowland's Creek was a Reserve set aside for travellers and their stock. The village was never formally proclaimed but the name was used in the advertisements for the first land sales in 1906. These were held in the first building, the Mechanics Institute, later the School of Arts.

Mount Uki was named on earlier maps, probably in line with the principal of recording names used by the indigenous population for geographical features. The accepted meaning is "place of many ferns", which is creditable given the lushness described by the early white settlers. It has been confirmed that ferns with an edible root are found in the area.

However, this origin has been seen as unreli-

able, so the Historical Society has tried to find other possible origins. One suggestion, that the name may have had Celtic roots, has been deemed unlikely by Gaelic speakers. An old atlas shows a town in the Philippines called Uki, while Encarta, when asked takes the searcher straight to Africa!

What has been discredited however, is the U.K.1 nonsense. According to Norm Smith of Tweed River Historical Society, "That was the Yanks when they came here during the War. They didn't know where they were, but they found their way out to Tyalgum and to Uki, to the pubs out there." Obviously, locals found much quiet amusement at this version and would have been unwilling to spoil the joke.

Resource photos held by the Uki & South Arm Historical Societies show log rafts in the Tweed River at Byangum, marked not with any destination, but with the name of the timber merchant to whom the cedar feller had sold his harvest.

Perhaps someone out there in our community with time to spare for further research on the Web via authoritative sources such as the Geographical Place Names Board or State Records in Sydney might be able to find other evidence.

Does anyone know how and why Parishes were named? Because in the County of Clyde, there are people living in the Parish of Uki.

I wonder what they think it means."

Your Historical Society meets on the 2nd Sat of each month. Currently we are involved in several exciting projects incl the Shire Community-based Heritage Study, Tweed Valley Pioneer Project, Local Records: - Storage & Conservation and of course an exhibition at the School in October. Our aim is to improve our skills and knowledge in the area of Local History and share this with our community. The office is open every Fri from 10am-12.30pm. We have room for many talents from an artistic touch for display to practical experience in data entry. For any enquiries ring Mary Roberts on 6679 5157.



Uki... Brick & Tile Suburbia?

UKIRA received the following letter from a concerned local resident in response to the article on 'Tweed's Rural Planning Strategy' in the previous issue of Uki News:

"Allowing further residential subdivision of "unprofitable" farms will not necessarily benefit Uki community. The relatively new subdivisions of Glenock and Braeside have generally become brick-&-tile suburbs, with the exception of those owners who have put some forethought and taste into their buildings.

Rural subdivision can be intelligently managed by the community, to require new construction to include solar electricity and heating, rain-water catchment, composting toilets, on-site

"greenbelt" grey water disposal, building designs that meld with the environment, by "freezing out" standardised brick & tiles that consume more energy than produced and whose owners often live as they would in Ballina or suburban Tweed Heads. Uki residents who enjoy rural ambience and who support sustainability can continue to enjoy this lifestyle which we have earned.

Perhaps too, we need to look at those farms deemed "unprofitable" to see if livestock grazing can be converted to productive organic fruit & vegetable production for local consumption.

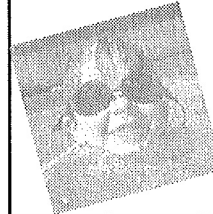
Let's not race down the path of unsustainable suburbanisation, without first discussing our options."

Ronald Wolff, Rowlands Creek, Uki

FOR YOUR
SWIMMING
LIFE

Are now offering
"Learn to Swim" &
Stroke Correction Classes
here in Uki this summer!

Mo/Tue afternoons, Sat morning
at Uki & Wed afternoon
in your own pool.



All ages
welcome!

Phone Ruth,
6679 5226

ARE YOU DOING THE
"JUGGLING ACT"
AFTER SCHOOL
WITH
CHILDREN'S
ACTIVITIES?



Uki After School Care
can help!

Open 3-6pm Mo to Fri, casual
or regular bookings,
6679 5128

The Graine

In Charles Street, Murwillumbah
Still has
LOTS OF GOODIES
FOR SALE

Vintage cars, light fittings, furniture,
spare parts, lamp bases & shades & 1000s of
separate light glass shades -
if you've broken a light in your home we
can guarantee to replace the glass!

Open 4 days, Mo, Tue, Wed, Thu
8.30am-5pm
Phone 6672 6653

If you bring a copy of this ad,
we'll take a further 10% off the prices,
which are below cost now!



CONGRATULATIONS to children and staff at Uki After School Care (aka Uki OOSH) for winning the 2002 Annual Tweed Shire Council Garden Competition ('School Project' category).

Ticked Off?!

Ticks, we've all experienced them. Large, small, grass, bush, shellback, cattle, paralysis... a day out in the garden or bush can have unwelcome results.

The most common tick in New South Wales is the paralysis tick, *Ixodes Holocyclus*, which is found along the State's eastern coastal strip and inland for about 30 kilometres. Ticks belong to the 'Arachnid' family, and are therefore closely related to spiders. In some susceptible people, tick bite may be life threatening and urgent medical attention is required.

Prevention is certainly the best medicine. Ticks do not jump, fly or drop from trees. They grasp passing hosts from the leaf litter, tips of grass, etc. Most ticks are probably

picked up on the lower legs and then crawl up the body seeking a place to feed. Wear appropriate clothing when outdoors in tick areas, including long sleeved shirts, long pants tucked into socks and a wide brimmed hat.

Ticks are more easily detected on light coloured clothing.

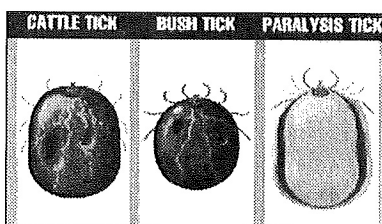
The application of a bug repellent on exposed skin can also help. Mix the following 100% Essential Oils and apply regularly (keeping away from the eyes), it will help with the mosquitos and flies too!

5 drops of Eucalyptus, 1 drop of Peppermint, 2 drops of Orange, 1 drop of Clove, 4 drops of

Lavender, 1 drop of Cinnamon, 2 drops of Lemon, 8 drops of Cedar, 30 ml carrier oil (eg sweet almond)

If a tick bite does occur, there are a number of treatment options to consider after removal.

- The essential oils of Tea-Tree, Chamomile and Lavender can be used directly on the site of injury to reduce swelling, itching and inflammation.
- Fresh Aloe Vera from the garden is highly effective in reducing pain and heat and will facilitate healing.
- If a local irritation, swelling, tenderness or mild allergic reaction persists; the Homoeopathic remedy *Ledum 12c* is the main remedy to consider. 3 to 4 doses (2 pilules or 7 drops) over a 24-hour period should be all that is needed to complete recovery. If symptoms persist beyond this, then see a health professional.



Domestic pets are also vulnerable to ticks. Homoeopathic *Ledum 12c*, as outlined above, can also be given to animals if they are experiencing ill effects from a tick bite. The homoeopathic remedy *Ixodes 30c* can be a useful preventative to tick paralysis. It should be given to the animal in a small amount of water once a day for seven days, then once a week for the tick season.

Roadworks & The Macadamia Tree...

By Phil Carr

Many of the processes of local government are bound by a range of legislative requirements. While this can sometimes cause frustration in the community, we need to remind ourselves that such rules and regulations are usually designed to protect a whole cross-section of community interests. This report on the Braeside road works illustrates the point.

Road works on Kyogle Road at Braeside were held up last month because approval was required to carry out additional excavations. In the process of seeking this amended approval, Council discovered that the additional work would require the removal of a mature native tree, the species of which, *Macadamia tetraphylla*, (or Rough-shelled Bush Nut) is classified as "Vulnerable" under the *Threatened Species Conservation Act 1995*. This species is a lowland subtropical rainforest plant primarily restricted to the Tweed and Richmond Valleys. Council is required under the Act to determine whether or not removal of the tree would have a significant impact on the species, and it was only after careful research and considera-

tion that environmental staff from Council determined that it would not. As a consequence, approval for the works was given, and the tree has since been removed. Factors that were considered include:

- The presence of other mature *Macadamia tetraphylla* in adjacent road reserve and private property.
- The size of the tree, which was too large to be transplanted.
- The precarious location of the tree high on the edge of the embankment.
- The fact that the tree's fruit fell onto the road & little chance of germination.
- The value of the tree to the local population through cross-pollination.
- The need to strengthen the species by conserving the genetic diversity within the population.

Notwithstanding the decision reached by Council, environmental staff, assisted by CSIRO plant scientists, have collected fruit and taken cuttings from the tree in an attempt to propagate the species. If successful, the young plants will be planted into the road reserve and, together with bush regen-

eration activities, the genetic diversity and viability of this population should be maintained.

Macadamia tetraphylla together with its south-eastern Queensland relative *Macadamia integrifolia* have been used to develop cultivars (ie cultivated varieties) for the international macadamia nut industry. Conserving the genetics of this species is important for both ecological and economic reasons, as the development of new cultivars relies on maintaining natural variation in the wild.

(I hope I haven't distorted some of the technical info kindly provided by Karen Cranney, Environmental Scientist, Tweed Shire Council).

By Judy Magee



JUDITH MAGEE

(Dip. Hom. Med. D.H. Couns. DRM. MATMS MAHA)

Classical Homoeopathy
Counselling
Flower Essence Therapy
Nutritional Advice

Phone: 6679 5855

Uki Shopping Centre

Main Street, Uki

Open everyday—7.30-5.30 weekdays

For your:
grocery, ice, video, hardware, fruit & veg, takeaway food & fuel

Yes!
we deliver your gas!

Proud to be part of
the Uki area!

Phone: 6679 5136
Fax: 6679 5200



UKI SCHOOL 'OUTBACK SHOWDAY' FETE

This is your personal invitation to attend the Uki social event of the year! The Uki School Fete is to be held on Friday 25 October between 2 pm and 7 pm.

Tell your friends because this will be an enormous afternoon packed full of fun, music and entertainment. And forget about cooking dinner because there will be plenty of lip-smacking food available - at very reasonable prices!

With an 'Outback Showday' theme, here's a sample of some of the exciting things to expect:

- Plenty of fun, and prizes to be won at 'Sideshow Alley'
- Loads of music, dance and other entertainment
- Pony rides, snail races, gumboot throwing, animal nursery, and much more
- Bargains at the plant stalls, toy stalls, 'Pamper' stall & 'Fantasy' stall
- Chocolate Wheel
- Huge variety of food and drink (no alcohol)
- PLUS your chance to produce a prize-winning entry in the Exhibition Hall

We are inviting local businesses to SPONSOR-A-STALL for \$20. For more information phone the Uki Public School on 6679 5128.

UKI SCHOOL FETE EXHIBITION HALL

Open to the Public

Get your exhibit ready for Uki School Fete's Exhibition Hall. Rosettes will be awarded for 1st and 2nd prize in each category. Judges Dot Lange, Shirley McIntyre and Betty Brims will be looking for quality, imagination and a SENSE OF HUMOUR. Judging will be in three age groups: Up to 8 years, 9-12 years, and Open. Here are the categories:

Biggest home grown vegetable / Strangest shaped fruit/vegetable / Best decorated fruit/vegetable / Best decorated cupcakes (minimum four) / Best unfilled sponge / Best flavoured large cake / Best homemade sweet lolly / Best scone (minimum four) / Best decorated boot / Most interesting craft piece / Oldest hat / Best dressed toy

So let your imagination run wild and GET CREATIVE!

For more info phone the Uki Public School on 6679 5128.

Soccer News



The Soccer season is drawing to a close, with the Uki Pythons enjoying a very successful season.

All of our junior teams have rated highly in the season, with our Under 12's through to the Grand Final after thrilling competitive play through the year. Our Under 11, Senior Women and Senior Men teams all made it into the Finals, but unfortunately didn't make it through.

A special mention must go to our mighty Under 8 team, who were runners up in this years Banana Cup. Displaying courage and talent beyond their years, they were just beaten 1-0 by Saints in the Grand Final. I was especially proud to be their Coach, and we were said to be the most improved team in the Tweed District Under 8's draw.

I would like to take this opportunity to thank Uki Sports Club, our dedicated Soccer committee, coaches, players, canteen helpers, parents and supporters for helping to make our 2002 Soccer season so successful.

Steve Maslen, President Uki Pythons Soccer Club.

THE STOKERS SIDING ANNUAL TRIVIA NIGHT is on again.

This year it will be held on Sat Oct 26 at the Stokers Hall. The theme is HALLOWEEN. So come in your scariest outfit to win best dressed male/female. We always have great prizes and at only \$5 a head it's a cheap and fun night out. Tables of 8 BYO drinks & nibbles - supper and hot drinks will be available. Bring your loose change along for additional, fun games with separate prizes. Don't miss out, call Elaine on 66779121 A/H to book a table (or part thereof). All proceeds go to Stokers Siding Primary School P & C. We also need 2 judges and an MC. Call Elaine if you're interested.

FINAL OFFER

Where Are You?!

We still need your help! UKIRA is putting together a Greater Uki Directory and we need to know where you are! If you are a resident living between the Byangum Bridge and the Nimbin turn-off, and haven't already let us know, please notify us now if you provide a service or product, e.g. Food Services, Accommodation, Childcare, etc.

Who do you contact to join the Tennis Club? When do you play? What sporting activities are at the Sports Club? Who do you contact

to find out? Do you teach Music or Art? WHO, WHEN & WHERE?!

Did you know there is a card club for those who love to play cards? There is a Pony Club, a Garden Club and a Rotary Club. Let us know, when do you meet and who is the contact? Who is the contact for UKI P&C? There may be some willing helpers who don't have children at the school. You may be marketing something like Bush Tucker, Coffee etc. Do you make and/or decorate cakes?

PLEASE LET US KNOW!

There are many newcomers and weekenders to Uki who may wish to participate in activities, join clubs or buy goods. And what about those of us who have lived here for a number of years and eventually discover something only to say "GEE! I didn't know that!"

So come on everyone, GET IN TOUCH by filling in the form below and popping it into our mailbox at the Post Office. Let's make the Directory of Greater Uki really great!

PLEASE INCLUDE ME IN THE GREATER UKI DIRECTORY:

TYPE OF ACTIVITY (e.g. Agriculture, Cake Making, Red Cross, Childcare, Markets, Plumber, Bob Cat, Drama Classes, Church Services):

NAME OF ORGANISATION (e.g. Rotary, Garden Club, Historical Society):

NAME OF CONTACT PERSON:

PHONE NUMBER: _____ FAX: _____ EMAIL: _____

DAY & TIME OF ACTIVITY (e.g. Art Classes Wed 9am to 12 noon, Childcare. Mo To Fri 4pm to 6pm, Residents Assn 1st Tue of month 7pm):

ANY OTHER INFORMATION: _____

If you have more than one entry please photocopy this form